

Fitting Instructions

Revo Turbo Inlet Pipe 2.5 TFSI RS3 (8V.2)/TTRS (FV)

Fitting Difficulty



Dealer Fit Recommended

Contents

Description	
Revo Assembled Inlet Pipe	1
Revo Intake Silicone Hose	1
Stock Turbo Collar	1
71mm ID x 1.5 Viton O-ring	1
M6x25 Flanged Head Bolt S/S	2
M5x16 Cap Head Bolt S/S	1
M5 Flat Washer S/S	1
100-120 Hose Clamp	1
4mm ID Silicone vacuum hose	1

Recommended Tools

Tools	Size
Ratchet	
Sockets	7mm/10mm
Torx Bits	T20/T25/T45
Spanner	8mm
Hex Key	5mm
Multi Spline	10mm
Constant Tension Pliers	
Dremel Tool with Cutting Discs	
Pick	
Flat Head Screwdriver	



Before starting, please ensure that the engine is cool. Engine temperatures can remain high for a substantial amount of time after use.



Fitting Instructions

Revo Turbo Inlet Pipe 2.5 TFSI RS3 (8V.2)/TTRS (FV)

Fitting Difficulty



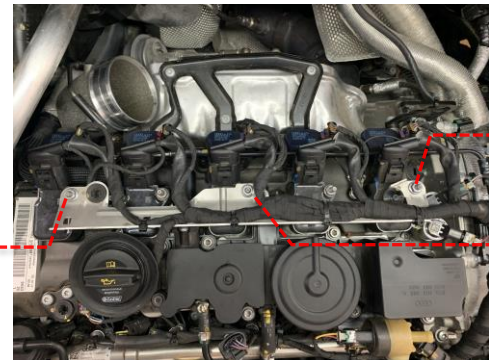
Dealer Fit Recommended

- 1 Remove the engine cover and then remove the intake back pipe to gain access.

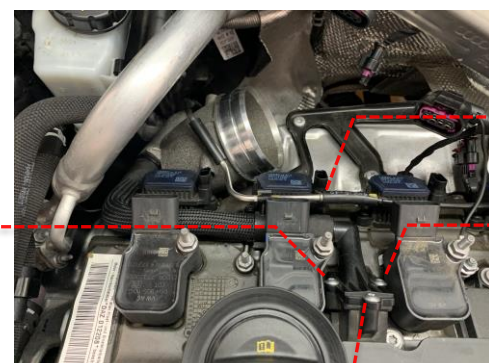


- 2 Remove the 3 x 10mm nuts from the top of the coil packs and then unclip the coil pack connector plugs. Next, unclip the cam-sensor, and once the assembly is loose you can remove the 10mm earth wire connector on the left.

Unclip the first 3 x VVT connectors at the back of the coil packs on the left side.



- 3 Remove the first 2 coil packs on the left side and then the 3 x T20 screws holding the PCV pipe to the top plate. Then pull the rubber actuator hose away from the hard pipe.



Fitting Instructions

Revo Turbo Inlet Pipe 2.5 TFSI RS3 (8V.2)/TTRS (FV)

Fitting Difficulty



Dealer Fit Recommended

- 4 Pull the rubber hose off the actuator at the turbo then remove the T30 bolt on the turbo inlet pipe.



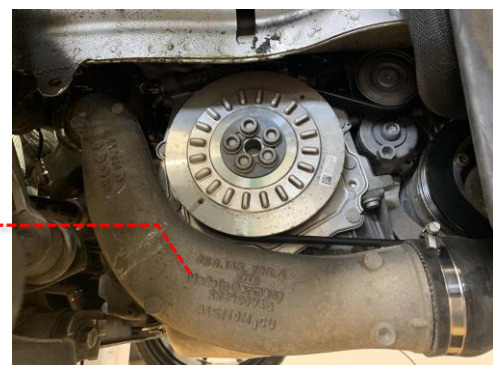
- 5 Raise car and remove the under tray.



- 6 Remove right-hand front wheel and wheel arch lining, to gain access.



- 7 Remove the discharge hard pipe from the turbo and intercooler.



Fitting Instructions

Revo Turbo Inlet Pipe 2.5 TFSI RS3 (8V.2)/TTRS (FV)

Fitting Difficulty



Dealer Fit Recommended

- 8 Remove the T30 bolt from the underside of the turbo inlet pipe then you can remove the pipe from the car through the top of the engine bay.



- 9 Using a Dremel or small cutting disc tool cut a slot into the security bolt to allow you to unscrew the PCV pipe from the OE inlet pipe.

Using the supplied M5x16 cap head screw and M5 washer attach the PCV pipe to the new Revo turbo inlet pipe on the machined adapter as shown.

Note: to allow the breather hose coupling to be optimally positioned the M5 fixing bolt is not fully tightened in assembly. Once the Revo inlet pipe is fully installed the breather pipe coupling can be carefully rotated to ensure adequate clearance to surrounding parts is obtained, and then the M5 bolt can be fully tightened.



- 10 Install the machined inlet adapter in the inlet pipe, ensure the O-ring is seated correctly in the adapter before installing the pipe.



Fitting Instructions

Revo Turbo Inlet Pipe 2.5 TFSI RS3 (8V.2)/TTRS (FV)

Fitting Difficulty



Dealer Fit Recommended

- 11 Install the Revo inlet pipe from the top of the engine bay, then using one of the M6 captive head bolts, bolt through the slotted section on the inlet to the turbo. Make sure the machined inlet adapter is seated in the turbo inlet correctly before tightening.



- 12 Raise the car again and install the other M6 captive bolt to the underside of the inlet to the turbo.



- 13 Install the new supplied vacuum line to the actuator on the turbo and then run the pipe around the back side of the turbo inlet to the top of the engine and connect to the hard pipe section.

Refit all OE parts back to vehicle. Reinstallation is the reverse of removal. Follow any factory torque specification requirements during reinstallation of OE parts.

If you are running the Revo carbon intake kit you can use the supplied silicone reducer to connect the carbon pipe to the inlet.

If you are using the Revo large bore back pipe then you will need to use the silicone supplied with the pipe to connect to the inlet.

Test drive the vehicle to ensure there are no leaks/part interference during operation. Installation is now complete!



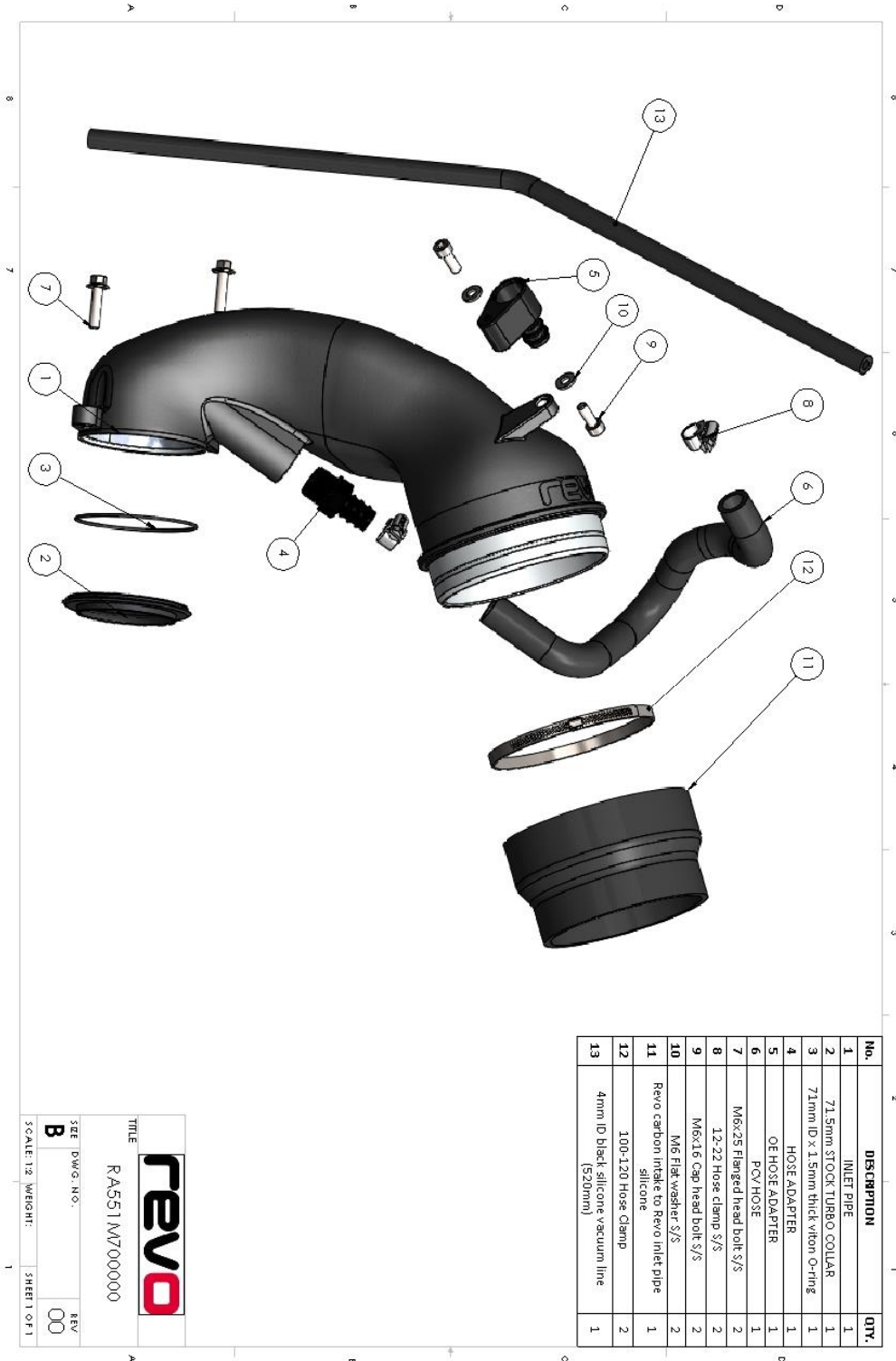
Fitting Instructions

Revo Turbo Inlet Pipe 2.5 TFSI RS3 (8V.2)/TTRS (FV)

Fitting Difficulty



Dealer Fit Recommended



No.	DESCRIPTION	QTY.
1	INLET PIPE	1
2	71.5mm STOCK TURBO COLLAR	1
3	71mm ID x 1.5mm thick Viton O-ring	1
4	HOSE ADAPTER	1
5	OE HOSE ADAPTER	1
6	PCV HOSE	1
7	M6x25 Flanged head bolt S/S	2
8	1.2-22 Hose clamp S/S	2
9	M6x1.6 Cap head bolt S/S	2
10	M6 Flap washer S/S	2
11	Revo carbon intake to Revo inlet pipe silicone	1
12	100-120 Hose Clamp	2
13	4mm ID black silicone vacuum line (520mm)	1

revo
 TITLE RA551M700000
 SEE DWG. NO. B REV 00
 SCALE: 1:2 WEIGHT: SHEET 1 OF 1